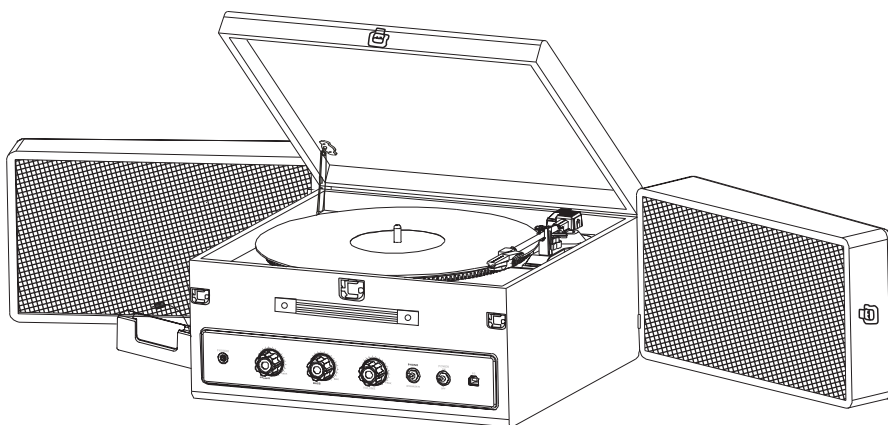


**CLASSICAL TURNTABLE WITH PC ENCODING ,
IPOD PLAYER , AUX IN,BLUETOOTH**



 **PYLE®**
VINTAGE
www.pyleaudio.com



MODEL : PLTT82BT
Nostalgic Music System
Operating Instructions Manual

CAUTION

TO PREVENT FIRE OR SHOCK HAZARD, DO NOT USE THIS PLUG WITH AN EXTENSION CORD, RECEPTACLE OR OTHER OUTLET UNLESS THE BLADES CAN BE FULLY INSERTED TO PREVENT BLADE EXPOSURE. TO PREVENT FIRE OR SHOCK HAZARD, DO NOT EXPOSE THIS APPLIANCE TO RAIN OR MOISTURE.

 <p>The lightning flash with arrow-head symbol, within an equilateral triangle is intended to alert the user to the presence of uninsulated 'dangerous voltage' within the product's enclosure that may be of sufficient magnitude to constitute a risk of electric shock to persons.</p>	<div>CAUTION</div> <div>RISK OF ELECTRIC SHOCK</div> <div>DO NOT OPEN</div> <p>WARNING: TO REDUCE THE RISK OF ELECTRIC SHOCK DO NOT REMOVE COVER (OR BACK), NO USER SERVICEABLE PARTS INSIDE. REFER SERVICING TO QUALIFIED SERVICE PERSONNEL.</p>	 <p>The exclamation point within an equilateral triangle is intended to alert the user to the presence of important operating and maintenance (servicing) instructions in the literature accompanying the appliance.</p>
--	---	---

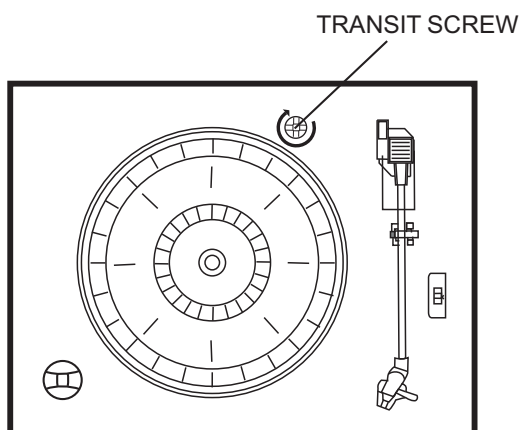
IMPORTANT SAFETY INSTRUCTIONS

- 1.) Read these instructions.
- 2.) Keep these instructions.
- 3.) Heed all warnings.
- 4.) Follow all instructions.
- 5.) Do not use this apparatus near water.
- 6.) Clean only with dry cloth.
- 7.) Do not block any ventilation openings. Install in accordance with the manufacturer's instructions.
- 8.) Do not install near any heat sources such as radiators, heat registers, stoves, or other apparatus (including amplifiers) that produce heat.
- 9.) Do not defeat the safety purpose of the polarized or grounding type plug. A polarized plug has two blades with one wider than the other. A grounding type plug has two blades and a third grounding prong. The wide blade or the third prong is provided for your safety. If the provided plug does not fit into your outlet, consult an electrician for replacement of the obsolete outlet.
- 10.) Protect the power cord from being walked on or pinched particularly at plugs, convenience receptacles, and point where they exit from the apparatus.
- 11.) Only use attachments / accessories specified by the manufacturer.
- 12.) Unplug this apparatus during lightning storms or when unused for long periods of time.
- 13.) Refer all servicing to qualified service personnel. Servicing is required when the apparatus has been damaged in any way, such as power-supply cord or plug is damaged, liquid has been spilled or objects have fallen into the apparatus, the apparatus has been exposed to rain or moisture, does not operate normally, or has been dropped.
- 14.) This appliance shall not be exposed to dripping or splashing water and no object filled with liquids such as vases shall be placed on the apparatus.
- 15.) Do not overload wall outlet. Use only power source as indicated.
- 16.) Use replacement parts as specified by the manufacturer.

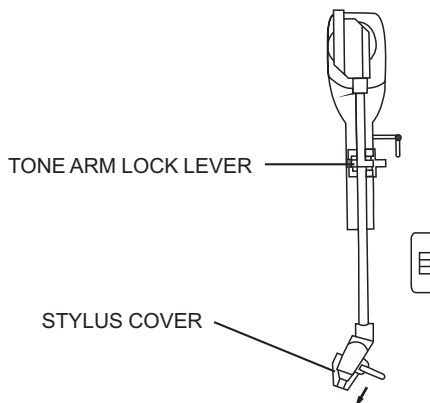
PREPARATION FOR USE

UNPACKING AND SET UP

- Carefully remove the unit from the display carton and remove all packing material from the unit.
- Unwind the DC power plug and extend it to its full length.
- Unwind the speakers and extend it to its full length(open the speakers fastener(L/R)).
- Place the unit on a stable, level surface, convenient to an AC outlet, out of direct sunlight, and away from sources of excess heat, dust, moisture, humidity, or strong magnetic fields.
- Connect the plug to your AC outlet.
- Raise the lid to expose the phonograph. The phonograph has been secured for shipment with a transit screw. Use a coin or screwdriver to turn the transit screw clockwise. This will allow the turntable to “ float ”.



- Remove the opaque white plastic stylus cover from the phonograph stylus by sliding it in the direction of the arrow.
- Discard the stylus cover.
- Remove the twist-tie that was used to secure the tone arm during shipment.
- Release the tone arm lock lever.
- Connect the plug to your AC outlet.



POWER SOURCE

This system is used dc adaptor operate on normal 120V 60Hz DC only. Attempting to operate from any other power source may cause damage to the system, and such damage is not covered by your warranty.

NOTE: If this plug will not fit into your outlet, you probably have an out-dated non-polarized AC outlet. You should have you outlet changed by a qualified licensed electrician. The DC adaptor output DC 12V, push in DC jack. Please pull the power plug during shock and unused for a long time.

The power plug and power jack should be matched as a suitable make and break device, in order to make operation conveniently.

IMPORTANT: Raising And Lowering The Lid

To open the lid, raise it as far as it will go until the lid support bracket 'locks' in the open position. To close the lid, lift it upward slightly until the lid support bracket 'unlocks' , and then gently lower the lid.

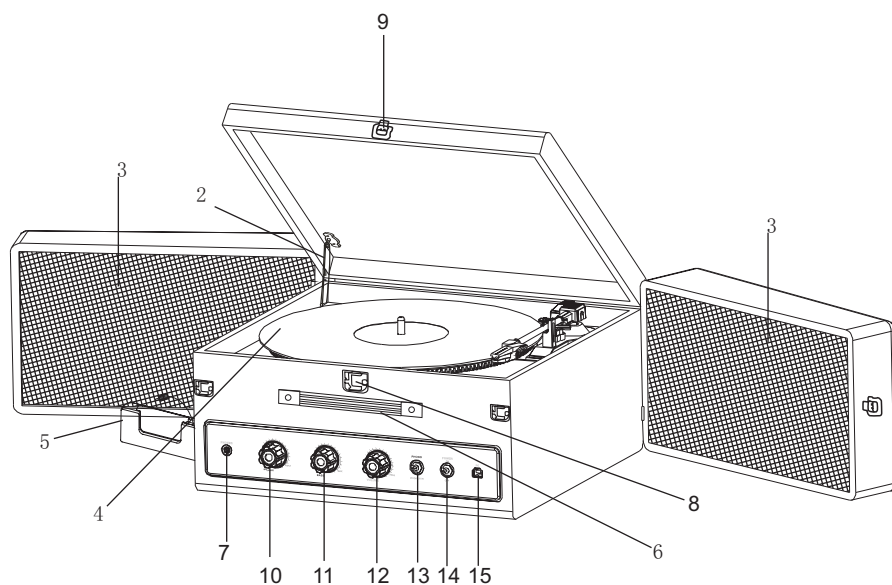
TO AVOID DAMAGING THE CABINET OR THE LID, NEVER FORCE THE LID CLOSED. ALWAYS RAISE THE LID TO RELEASE THE LID SUPPORT BRACKET.

PROTECT YOUR FURNITURE

This model is equipped with non-skid rubber 'feet' to prevent the product from moving when you operate the controls. These 'feet' are made from non-migrating rubber material specially formulated to avoid leaving any marks or stains on your furniture. However certain types of oil based furniture polishes, wood preservatives, or cleaning sprays may cause the rubber 'feet' to soften, and leave marks or a rubber residue on the furniture. To prevent any damage to your furniture we strongly recommend that you purchase small self-adhesive felt pads, available at hardware stores and home improvement centers everywhere.

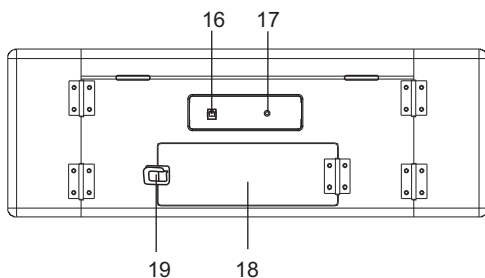
LOCATION OF CONTROLS AND INDICATORS

FRONT PANEL



- | | |
|------------------------------------|------------------------------|
| 1) Phonograph Lid. | 9) Turntable's Fastener plug |
| 2) Phonograph Lid Support Bracket. | 10) BALANCE control |
| 3) Speakers | 11) BASS control |
| 4) Turntable. | 12) VOLUME control |
| 5) IPOD slot | 13) FUNCTION control |
| 6) Handle | 14) POWER Button |
| 7) Phones jack | 15) PC port |
| 8) Turntable's Fastener | |

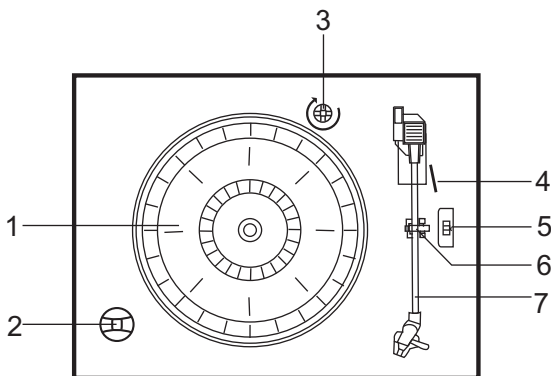
BACK PANEL



- | |
|------------------------------------|
| 16) DC IN Jack |
| 17) AUX IN Jack |
| 18) DC SUPPLY COMPARTMENT |
| 19) DC SUPPLY COMPARTMENT FASTENER |

PHONOGRAPH

- 1) Turntable.
- 2) 45 RPM Adapter.
- 3) Transit Screw.
- 4) Cue Lever.
- 5) Speed Selector
(33 & 45 & 78 RPM).
- 6) Tone Arm Lock.
- 7) Tone Arm with Stylus.



BLUETOOTH FUNCTION OPERATION:

1. Turn on the unit, rotate the volume control to desert level.

Turn the Function Knob to PH mode, and make sure the tone-arm is on the resetting state. A short Bluetooth starting tone can be heard.

2. Turn on your Bluetooth device and scan. It will be displayed as "Pyle Turntable" when discovered by your Bluetooth device. Enter password "0000" during pairing if necessary

3. When the unit is paired with your Bluetooth device, you can hear a short tone from the speakers.

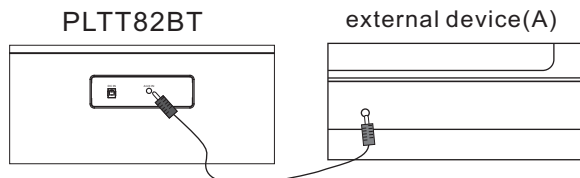
Play your Bluetooth device as you normally do and the sound will be played from this unit. Then you may enjoy the music.

Note:

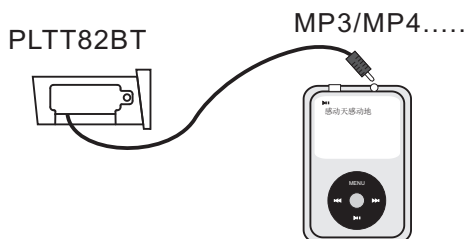
1. Make sure your Bluetooth device and this unit is within 10 meters
2. Check and see if there are other bluetooth devices nearby interfering the signal and connection.
3. This unit could be paired by multiple different Bluetooth devices, but could only be connected and played by one of them at a time. Make sure no others device is actively connected to it already when you are trying to connect the one you are working on.

AUX IN OPERATION

- 1) Set the VOLUME to desired location.
- 2) Place the POWER/FUNCTION control to AUX position, insert the audio cable (not included) into the matching "AUX IN" socket of the unit (PLTTB8UI), operate A as usual and through the speaker of PLTTB8UI, you will hear the sound exported from A.



3) Place the Mp3 player (not included) into the Mp3 player slot of the left on the unit, insert the AUX IN plug into the Mp3 player phones jack , you will hear the sound exported from PLTT82BT.



BASS ON/OFF OPERATION

Rotate the BASS to control the bass boost MIN. or MAX.

BALANCE OPERATION

Rotate the BALANCE to counterpoise the speaker sound(L/R).

PLAYING RECORDS

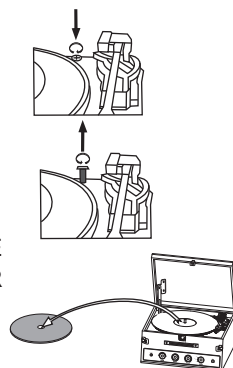
This system includes a full-size, 3-speed, belt-drive turntable. You can play 33, 45, and 78 RPM records.

- 1) Rotate the VOLUME control to set the Volume to a low level.
- 2) Set the POWER/FUNCTION selector(AUX/PHONO/OFF) to the PHONO position.
- 3) Make sure that you have removed the stylus cover from the stylus and have released the Tone Arm Lock that secured the tone arm to the tone arm rest.
- 4) Set the turntable Speed Selector to the appropriate speed, 33, 45, or 78 RPM. If you are playing 45 RPM singles , place the 45 RPM adapter on the center spindle.
- 5) Place your record on the center spindle.
- 6) Raise the CUE lever to lift the tone arm off its rest. Move the tone arm to the edge of the record. The turntable starts automatically. Use the CUE lever to gently lower the tone arm on to the record.
- 7) Adjust the VOLUME control to the desired level.
- 8) When the tone arm reaches the end of the record it automatically returns to the tone arm rest and the record player stops.
- 9) To turn the system 'off' , rotate the POWER/FUNCTION control to OFF position.

NOTE: Do not turn or stop the turntable manually. Moving or jarring the Turntable without securing the Tone Arm clamp could result in damage to the Tone Arm.

IMPORTANT!!

- TO PROTECT THE TURNTABLE FROM DAMAGE DURING TRANSPORTATION, A SILVER TRANSIT SCREW IS LOCATED AT THE UPPER RIGHT OF THE TURNTABLE PLATFORM.
- BEFORE PLAYING, PLEASE USE A SCREWDRIVER TO TURN THE TRANSIT SCREW IN A CLOCKWISE DIRECTION (SCREW GOING DOWN) COMPLETELY TO UNLOCK THE TURNTABLE.
- TO LOCK THE TURNTABLE AGAIN FOR TRANSPORTATION, PLEASE TURN THE SCREW IN COUNTER-CLOCKWISE DIRECTION.
- REMOVE THE PAPER MAT FROM THE TURNTABLE BEFORE PUTTING YOUR RECORD ON THE CENTER SPINDLE.



AUX IN/PHONO RECORDING (Quick-Start Guide)

- 1、 Set the FUNCTION to AUX or PHONO position, playback the tracks on the AUX or PHONO.
- 2、 Install the soft disc and step by step to fix the Audacity in the computer.
- 3、 Set the computer before record:
 - 1) Set the volume control → attribute → record® → mixer: SSS USB Audio Device → YES and then adjust the volume to max..
 - 2) After open the Audacity, choose → Edit → preferences enter the Audacity preferences, choose Recording → Device(AK5371);
 - 3) then choose quality → Default sample format → 16-bit;
 - 4) choose Interface again, the language to choose the ENGLISH, choose OK to sure all sets. and press the SKIP TO START, PLAY, RECORD, PAUSE, SKIP TO END button of the Audacity soft to set you want RECORD the tracks.

- 4、 After recording, you can edit the record and export to WMV format.

Audacity and USB Connection

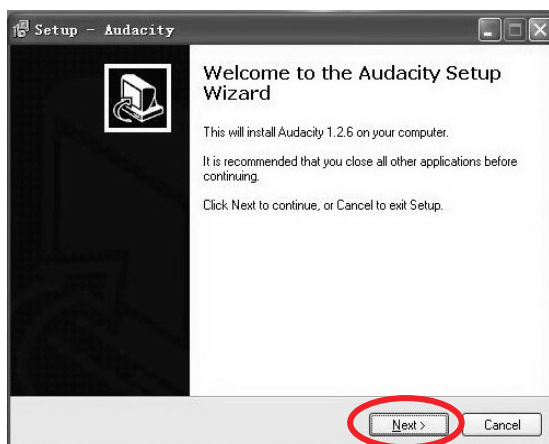
It supports Window95 /Window XP/Window 7/Vista or more advanced version, with the EMS memory more than 128MB and Audacity takes space of 5MB.

INSTRUCTION FOR PC RECORDING

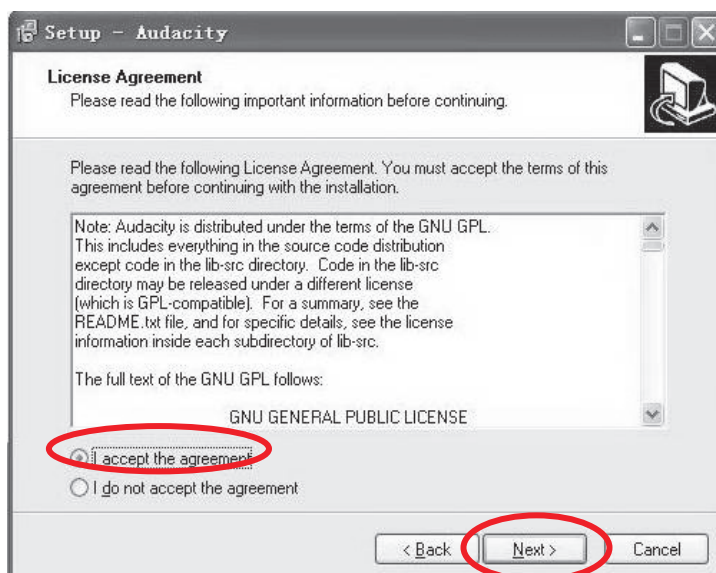
1. Software installation

1.1. Insert the CD disk into drive of PC, and read it;

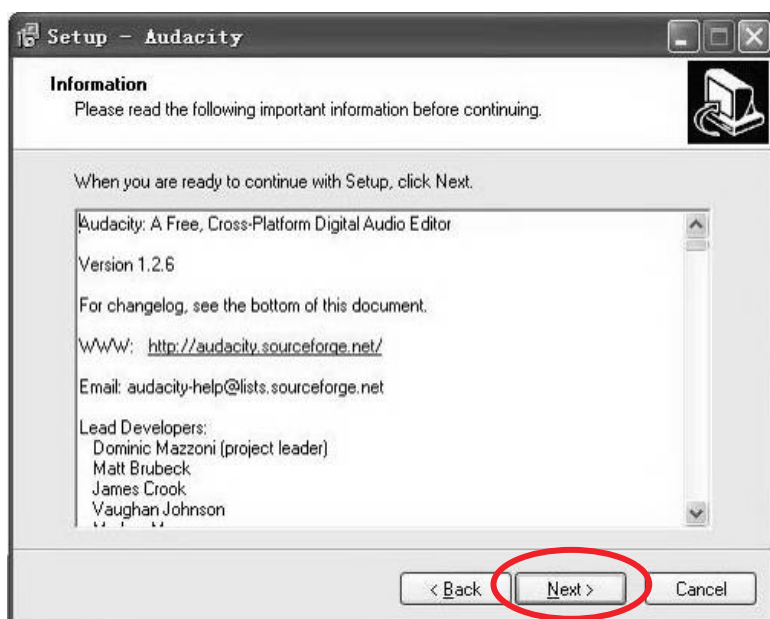
1.2. Open the software, double press the file "Audacity.exe", then press "next" to go forward;



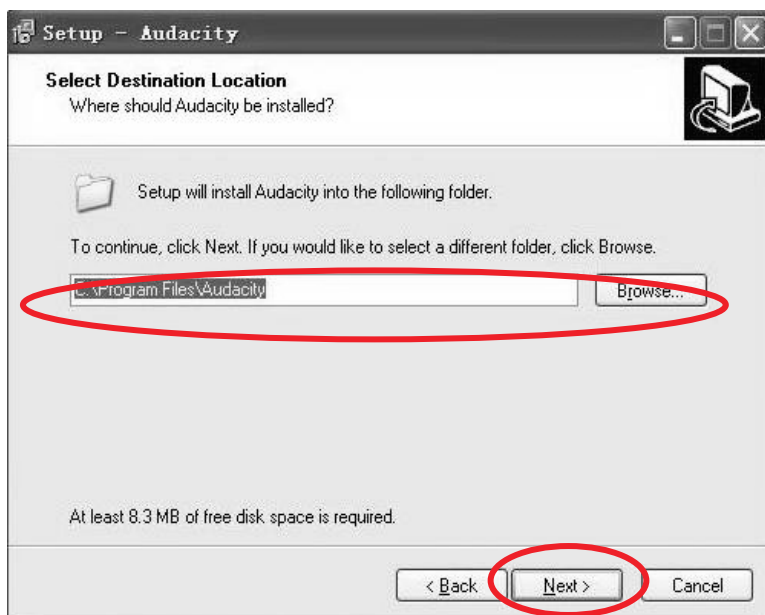
1.3. Choose I accept the agreement, and press "NEXT" to go forward;



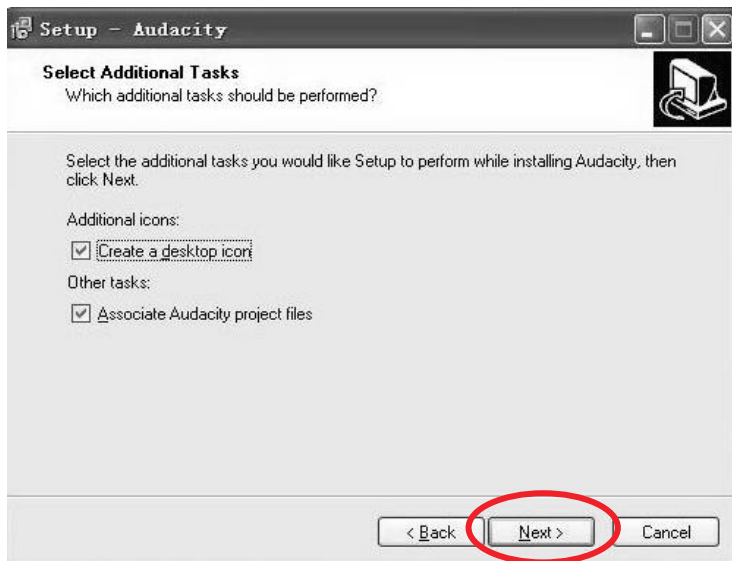
1.4. Press "next" to go forward;



1.5. Choose the destination location, and press to go forward;



1.6. Press "next" to go forward;



1.7. Waiting for installation finished, and press "finish" to end the installation;

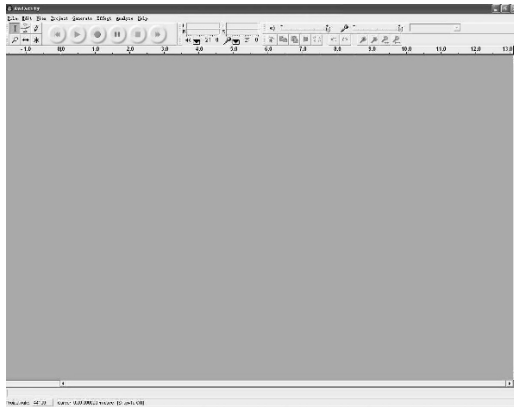


1.8. Choose the language as user's need;

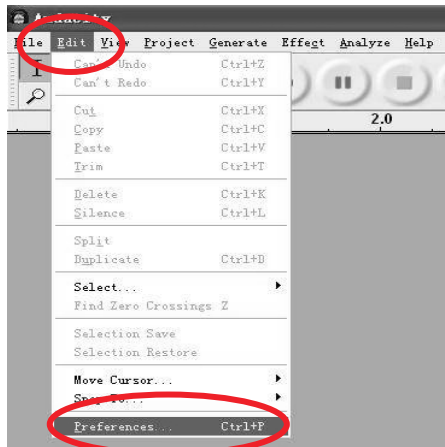


2. Recording:

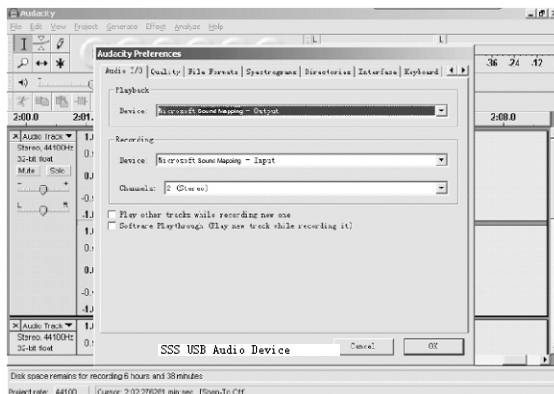
2.1. Open the software;



2.2. Choose "Edit" menu, then choose "Preferences";



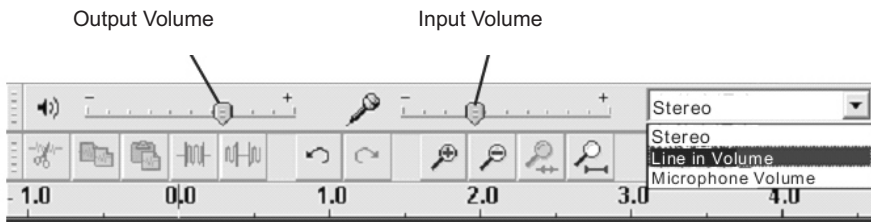
2.3. Audacity Preferences



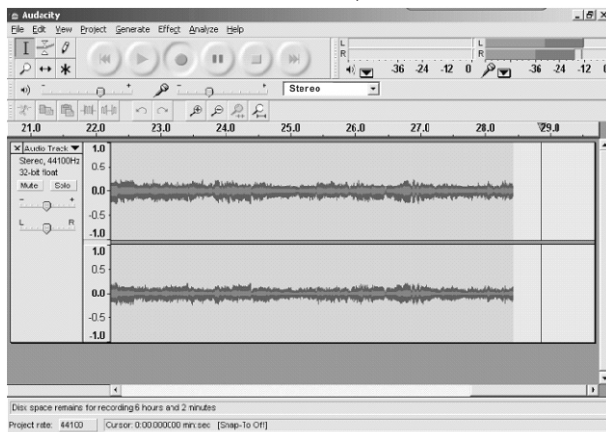
NOTE: you need to check your computer audio properties, the sound recording should be selected “SSS USB Audio Device” as below.



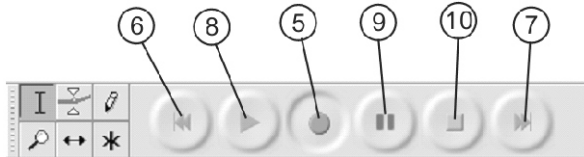
2.4. Adjust the output and input volume.



2.5. Select the record button • to record the disc, the left and right tracks will show on the interface;



- 2.5.1 Press this button •, start recording.
- 2.5.2 ⑥ Click the ⏮ button to skip to
- 2.5.3 ⑦ Click the ⏭ button to skip to end;
- 2.5.4 ⑧ Click the ▶ button to play;
- 2.5.5 ⑨ Click the ⏸ button to pause the record play,
- 2.5.6 ⑩ Click the ■ button to stop the recording.



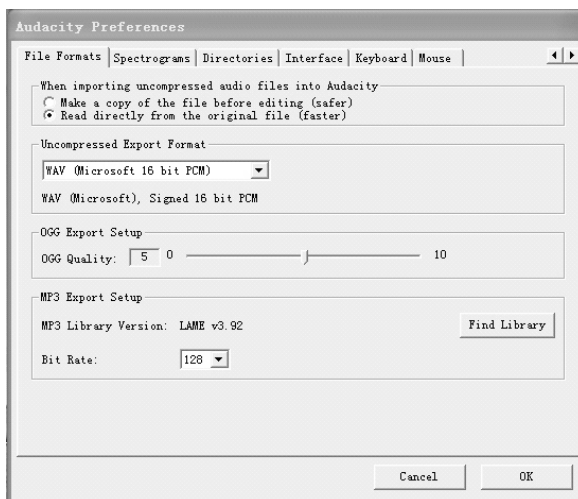
3. Export the Music Files for WAV,MP3,Format.

- Once you have finished recording, you should save your music to the computer.
- Click File menu and move down to Export as WAV format,MP3format or Ogg Format.
- Click on any format to save the music. and you will be asked for the file name of the music recording.
- Note: Audacity does not export MP3 files directly, you should download the LAME MP3 encoder. A link to find LAME MP3 can be found at <http://audacity.sourceforge.net>

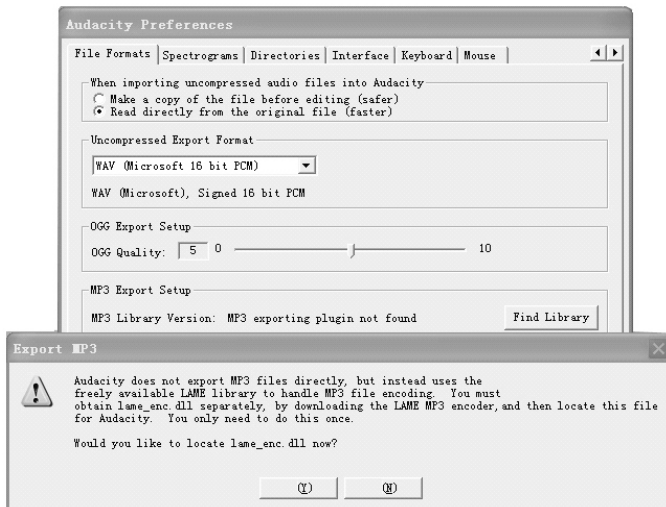
If do not see the sound waves on the Interface,when recording please adjust the line in volume as follows;

Specific Steps as follows:

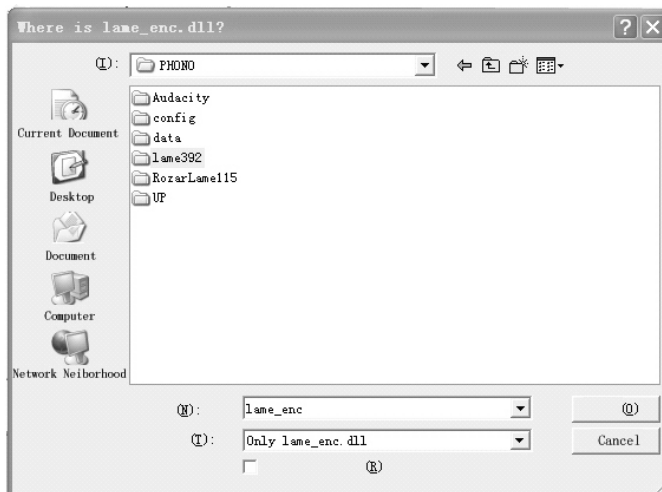
- 3.1) Download "lame-enc.dll" file, and install it to the software list.
- 3.2) Open the "Audacity" software, click Main Menu. Select "edit", "Parameter", "File Formats", and click the "Searcher"



3.3) After opened, it will come to the following menu, click "YES" to go to "Lame-enc. dll", and find the file's location.



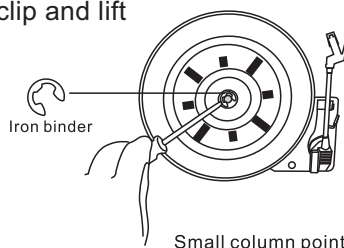
3.4) After you find the "lame-enc.dll" file, open it and click "Y" to finish the installation.



THE TURNTABLE DRIVE BELT IS FACTORY FITTED – USE THESE INSTRUCTIONS ONLY IF THE TURNTABLE FAILS TO REVOLVE. . . .

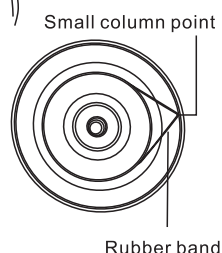
STEP 1

Use a screwdriver to remove the black iron C-clip and lift the turntable off the phonograph mechanism.



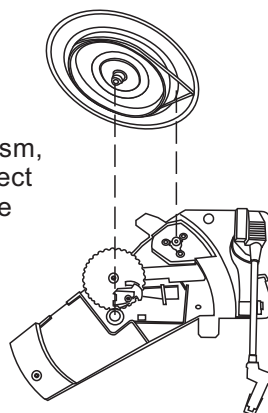
STEP 2

Retrieve the dropped black rubber turntable drive belt and replace it around the column on the bottom of the turntable, then pull it out gently without overstretching and hook the band around the small column point at the edge of the turntable, as shown in the diagram.



STEP 3

To fix the turntable back onto the phonograph mechanism, make sure the column point is positioned over the correct place on the phonograph mechanism, while placing the axis of the turntable in the hole on the phonograph mechanism, as shown in the diagram.



STEP 4

Gently turn the turntable until a 'pop' sound is heard, which indicates the repositioning of the rubber band. Replace the C-clip to secure the turntable.

